

# Theme Park Maths



Welcome to Theme Park Maths, a unique investigation which sees you plan, build and operate a theme park. Your decisions throughout the investigation will be crucial as to whether you make a profit or a loss.

Good luck!

Name \_\_\_\_\_

Class \_\_\_\_\_

# Theme Park Maths

## The scenario

A plot of land has become available and you have decided to build a brand new theme park.

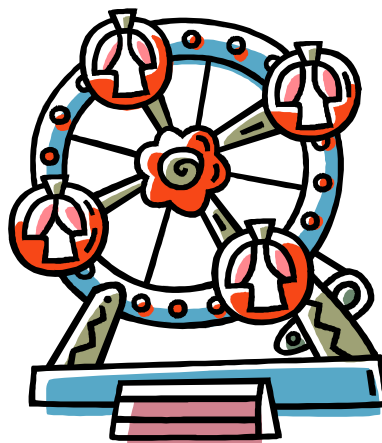
**You have managed to secure a £500 000 loan from the bank**

During this activity you will have a range of tasks to complete, from building your theme park, to working out how much it costs to run and most importantly working out how much profit you can make

## Task 1

Your first task is to plan your park. The piece of square paper you will receive will be your park. You must carefully decide what kind of rides you are going to have. You also need to think about the other facilities visitors will need when they come to your theme park. For example, toilets, cafes, shops and paths will all be available for purchase.

Many theme parks have different areas that are 'themed'. Therefore you might like to have an African area, a wild west American area or a Space area. Think carefully about what you would like to include in yours and make your park the best in the UK.



## **Task 1 - Setting up your theme park.**

Your spending limit is £500 000. Design and draw your theme park on the squared paper. You must not go over your spending limit and you must have car parks, toilets, paths to connect all the items, cafes and shops for your visitors. It is not about just having rides. You will need to please all of your visitors

Each attraction comes under a different category. Each category varies in price. Choose carefully from the prices and information page, making sure you have something which appeals to everyone.

Follow the key below when colouring in the plan of your park.

### **Theme Park Key**

**Category 1 Rides:** Red

**Category 2 Rides:** Yellow

**Category 3 Facilities:** Purple

**Bins:** Orange

**Toilets:** Pink

**Trees:** Green

**Lakes:** Blue

**Picnic Benches:** Brown

**Paths and Car Park:** Grey

## Prices

**Category 1 Attractions** - £50 000 each. These attractions take up 12cm<sup>2</sup>



A rollercoaster



A water ride



A ferris wheel

**Category 2 Attractions** - £25 000 each. These attractions take up 6cm<sup>2</sup>



A bouncy castle



Dodgems



A Fun House



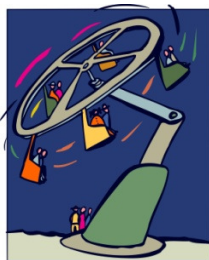
A haunted house



Merry-go-round



A Pirate Ship



Spinning Ride



Circus Tent



Train

**Category 3 Attractions** - £8 000 each. These attractions take up  $4\text{cm}^2$



A Cafe



A Shop

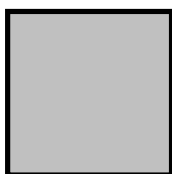


Ice Cream



First Aid Centre

**Other facilities and attractions** - These items are individually price



Path - £200 per 5cm length



Tree - £200 per square  
(1 square per tree)



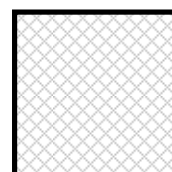
Lake - £1 000 per square



Toilets - £1 000.  
 $4\text{cm}^2$  per block of toilets



Rubbish Bin - £50  
 $1\text{cm}^2$  per bin



Car Park - £500 per square.  
Each square will take 100



Picnic Benches - £100 per  
bench

## Task 2: Running your theme park

To run your theme park the following costs will apply to each item that you have every day. How much will it cost to run your theme park for one day?

Costs				
Item	Staff Costs	Electricity, Maintenance and Repairs	Number in park	Total Costs per day
Category 1 Ride (per ride)	£40 a day	£50 a day		
Category 2 Ride (per ride)	£30 a day	£30 a day		
Category 3 Facility (per facility)	£20 a day	£20 a day		
Toilets (for all toilets)	£5 a day	£5 a day	NA	
Bins (for all bins)	£31.50 a week	£5.25 a week	NA	
Trees (for all trees)	£91.25 a year	None	NA	
		Totals		

Complete the table above.

How much does it cost to open your park for one day? \_\_\_\_\_

### Extension Activity

What about one week? \_\_\_\_\_

One year? \_\_\_\_\_

## Task 3 - Entry Fee

How much does it cost to open your park each day? \_\_\_\_\_ (*figure from task 2*)

How many visitors do you think you will have each day? (*remember it's a brand new park and not many people know about it yet!*)

Make an estimate: \_\_\_\_\_

Give your plan to a partner, you must not tell them anything about your park. They must use the criteria below to decide your entry fee.

### **Price Category 1 - £20 per person.**

- Four or more category 1 rides
- 10 or more rides in total
- 6+ category 3 facilities
- A first aid centre
- A well set out park with carefully placed bins, benches, toilets and paths.

### **Price Category 2 - £15 per person.**

- Two or more category 1 rides
- 7 or more rides in total
- 4 or more category 3 facilities
- A first aid centre
- Some consideration to where bins, toilets, benches and paths are placed.

### **Price Category 3 - £10 per person**

- One or more category 1 rides.
- 5 or more rides in total.
- 2 or more category 3 facilities.
- Some errors in where bins, toilets, benches and paths are placed which may lead to unhappy customers.

### **Price Category 4 - £5 per person**

- At least 3 rides
- At least 1 category 3 facility.
- Some errors in where bins, toilets and paths are placed which may lead to unhappy customers.

Decide on the entry price and enter it here £ \_\_\_\_\_

## Task 4 – How much do you make on the entry fee?

Calculate how much you make each day based on the entry fee you set on the previous page.

Day	Number of visitors	Income	Day	Number of visitors	Income
1	50		16	89	
2	75		17	104	
3	66		18	130	
4	49		19	209	
5	61		20	143	
6	67		21	99	
7	102		22	111	
8	110		23	206	
9	87		24	350	
10	21		25	300	
11	24		26	278	
12	67		27	453	
13	66		28	294	
14	98		29	367	
15	109		30	359	



## Task 5 - Profit and Loss

Each visitor to your theme park will spend;

- £4 at each café you have
- £3 at each shop you have
- £1 at every ice cream stand you have

Work out your total profit from the admission price (gate), cafes and shops. Now take away your total costs that you have already worked out and find your profit or loss for each day.

Day	Number of visitors	Income					Total Costs (b) (Task 2)	Profit (a-b)
		Admission (Task 4)	Café	Shop	Ice Cream	Total (a)		
1	50							
2	75							
3	66							
4	49							
5	61							
6	67							
7	102							
8	110							
9	87							
10	21							
11	24							
12	67							
13	66							

14	98							
15	109							
16	89							
17	104							
18	130							
19	209							
20	143							
21	99							
22	111							
23	206							
24	350							
25	300							
26	278							
27	453							
28	294							
29	367							
30	359							
							Total	

What profit or loss have you made in the first month of opening your theme park?

\_\_\_\_\_

## Task 6 – Finding your Annual Profit

Your monthly profit increases by 10% each month for next 5 months. Calculate your profit for the rest of the year that your park is open for.

Month 1 Profit \_\_\_\_\_

Month 2 Profit \_\_\_\_\_

Month 3 Profit \_\_\_\_\_

Month 4 Profit \_\_\_\_\_

Month 5 Profit \_\_\_\_\_

Month 6 Profit \_\_\_\_\_

First Year Profit \_\_\_\_\_

Money left over after building your theme park \_\_\_\_\_ (*figure from task 1*)

Total in the bank at the end of the first year \_\_\_\_\_

## Task 7 - Making improvements

It is the end of your first season you have \_\_\_\_\_ in the bank. You can now invest 40% of these profits to try and improve your park.

I can spend \_\_\_\_\_ on improving my park.

**Improvements can be done in two ways.**

1) Clearing land.

- £10 000 per square to clear land where there is a category 1 or 2 attraction/facility
- £5 000 per square to clear land where there is a category 3 facility
- £1 000 per square to clear a toilet, path, car park, lake or tree.

**OR**

Buying extra land

- £5 000 per new square.

2) Advertising

You can advertise in three different ways but you can only choose one.

Leaflet

These will cost you £50 000. However you will increase your attendance by 10% a day

Radio

This will cost you £100 000. However you will increase your attendance by 20% a day

TV

This will cost you £250 000. However you will increase your attendance by 30% a day

Decide what improvements you wish to make and record them clearly showing what you have spent and what you have left. Remember you can only spend 40% of what you have in the bank.

I have spent \_\_\_\_\_ on improvements.

How much do you now have in the bank altogether? \_\_\_\_\_

**Making it even better...**

You can now add new features to your park using 1/3 of the money you have left in the bank. (figure above) There are a number of new rides and facilities which have become available. You can add these to your park if you have the space and money to do so. You can also add in the features that were on the original list

Remember to keep clear records of how much money you are spending and most importantly how much money you have in the bank. You will need to update the plan of your park. If you have bought extra land you may need to stick squares onto your paper.

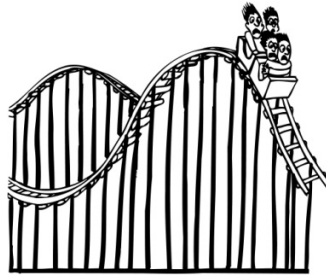
## GET READY FOR THE SECOND SEASON!

### 2<sup>nd</sup> SEASON - NEW FEATURES

**Category 1 Attractions** - £50 000 each. These attractions take up 12cm<sup>2</sup>



Go Karts



Big Dipper Rollercoaster

**Category 2 Attractions** - £25 000 each. These attractions take up 6cm<sup>2</sup>



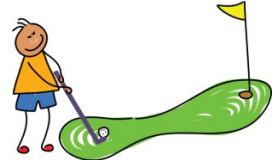
Restaurant



Adventure Playground



Rubber Ring Rapids



Crazy Golf

**Category 3 Attractions** - £8 000 each. These attractions take up 4cm<sup>2</sup>



Sweet Shop



A photo kiosk  
(per ride). Must  
be within 2  
squares of the  
ride.

## Task 8: Running your theme park (season 2)

As with everything, costs increase every year. To run your theme park for the second year the following costs will apply to each item that you have every day. How much will it cost to run your theme park for one day?

Costs				
Item	Staff Costs	Electricity, Maintenance and Repairs	Number in park	Total Costs per day
Category 1 Ride (per ride)	£70 a day	£80 a day		
Category 2 Ride (per ride)	£50 a day	£50 a day		
Category 3 Facility (per facility)	£40 a day	£30 a day		
Toilets (for all toilets)	£10 a day	£7 a day	NA	
Bins (for all bins)	£31.50 a week	£5.25 a week	NA	
Trees (for all trees)	£91.25 a year	None	NA	
		Totals		

Complete the table above.

How much does it cost to open your park for one day? \_\_\_\_\_

### Extension Activity

What about one week? \_\_\_\_\_

One year? \_\_\_\_\_

## Task 9 - Entry Fee

Decide on a price per person to enter your theme park for the second year.

How much does it cost to open your park each day? \_\_\_\_\_ (*figure from task 8*)

How many visitors do you think you will have each day during your second season?

Make an estimate: \_\_\_\_\_

Give your plan to a partner, you must not tell them anything about your park. They must use the criteria below to decide your entry fee. You must choose a different person than you did in season 1.

### Price Category 1 - £25 per person.

- Six or more category 1 rides
- 15 or more rides in total
- A first aid centre
- 6 or more category 3 facilities
- A detailed and well set out park with carefully placed bins, benches, toilets and paths.

### Price Category 2 - £20 per person.

- Four or more category 1 rides
- 10 or more rides in total
- A first aid centre
- 6 or more category 3 facilities
- A well set out park with carefully placed bins, benches, toilets and paths.

### Price Category 3 - £15 per person.

- Two or more category 1 rides
- 7 or more rides in total
- A first aid centre
- 4 or more category 3 facilities
- Some consideration to where bins, toilets, benches and paths are placed.

### Price Category 4 - £10 per person

- One or more category 1 rides.
- 5 or more rides in total.
- 2 or more category 3 facilities.
- Some errors in where bins, toilets, benches and paths are placed which may lead to unhappy customers.

Decide on the entry price and enter it here £ \_\_\_\_\_

## Task 10 – How many visitors?

Here are your visitor numbers for each month.

May (31 days): 4 800 visitors

June (30 days): 5 750 visitors

July (31 days): 5 980 visitors

August (31 days) 7 340 visitors

September (30 days) 5 640 visitors

However depending on the improvements you made you may in fact have attracted more people.

If you bought a leaflet your attendance figures increased by 10%

If you bought a radio advert your attendance figures increased by 20%

If you bought a TV advert your attendance figures increased by 30%

Write down your new attendance figures below

May (31 days): \_\_\_\_\_

June (30 days): \_\_\_\_\_

July (31 days): \_\_\_\_\_

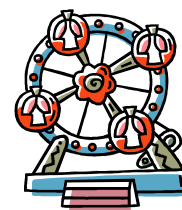
August (31 days): \_\_\_\_\_

September (30 days): \_\_\_\_\_

Total visitors: \_\_\_\_\_



## Task 11 - What is your profit?



Calculate your season 2 income by completing the task below.

**So...**

Total number of visitors to your park during season 2 \_\_\_\_\_ (taken from task 10)

Entry fee £ \_\_\_\_\_ (taken from task 9)

Total income made on the gate £ \_\_\_\_\_ (multiply the 2 figures together)

**Then..**

How much does it cost to open your park every day? £ \_\_\_\_\_ (taken from task 8)

Your park is open for 153 days this year so you need to multiply the above figure by 153.

Total cost of opening your park for the season. £ \_\_\_\_\_

- **Total profit made in season 2 so far: £ \_\_\_\_\_**  
(total income on gate - total cost of opening park)

**HOWEVER...**

$\frac{1}{2}$  of your customers spend £10 at **one** of your restaurants. Total income: \_\_\_\_\_

Every customer spends £5 at **each** café you have. Total income: \_\_\_\_\_

Every customer spends £2 at **each** sweet shop you have. Total income: \_\_\_\_\_

Every customer spends £4 at **each** shop you have. Total income: \_\_\_\_\_

Every customer spends £1 at **each** ice cream stand you have. Total income: \_\_\_\_\_

Every customer spends £3 at **each** photo kiosk you have. Total income: \_\_\_\_\_

**What is the total income made on your attractions? \_\_\_\_\_**

Now add this amount to the figure at the top of the page (the figure in bold next to the bullet point)

**Total profit in season 2: \_\_\_\_\_**

## Task 12: Taxes and Insurance!

At the end of season 2 you receive a letter from the Inland Revenue. These are the people who collect taxes for the government.

As you are in charge of your own company you have to pay tax on the profits you make.

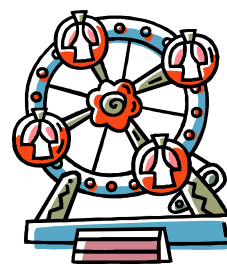
30% of your profits in season 2 now have to be paid to the government in the form of taxes.

**Work it out.....**

Total profits on season 2: £\_\_\_\_\_

30% of your profits: £\_\_\_\_\_

Total amount to be paid in taxes: £\_\_\_\_\_



**New current total profit for season 2:** \_\_\_\_\_

**Insurance renewal...**

Unfortunately the bad news doesn't end there.

The insurance on your park is up for renewal. Insurance is a legal requirement and you are not allowed to open your park without a certificate. Therefore you have no choice but to renew the insurance certificate at the following costs.

**Price Category 1:** £200 000

**Price Category 2:** £175 000

**Price Category 3:** £150 000

**Price Category 4:** £125 000



Deduct the above costs from your yearly profits.

**What are your final season 2 profits:** \_\_\_\_\_

**What money do you now have in the bank:** \_\_\_\_\_

## Task 13: Your loan!

At the beginning of season 1 you took out a £500,000 loan with Barclays Bank.

In season 1 it was interest free which meant at the end of season 1 you still owed £500,000 to the bank.

However in season 2 and 3 the loan is subject to 11% interest. This means that 11% is added onto the loan at the end of every season.

Work out how much you now owe:

**Season 1:** £500,0000

**Season 2:** £\_\_\_\_\_ (add 11% onto £500,000)



**So...**

You are now at the end of season 2.

What is the total amount in your bank?      £\_\_\_\_\_

How much loan do you owe? £ \_\_\_\_\_

## Task 14: Your final season!

You can now make a number of improvements to your park for its final year!

This can be done in two ways. You have unlimited spending this year but spend wisely and remember you can only spend what you have in the bank.

### Making Improvements to your park

#### 1) Clearing land you already have

- £10 000 per square to clear land where there is a category 1 or 2 attraction/facility
- £5 000 per square to clear land where there is a category 3 facility
- £1 000 per square to clear a toilet, path, car park, lake or tree.

OR

#### Buying extra land

- £5 000 per new square. (You may like to invest in making some extra space in your park as there are some exciting new additions in your final season which could make you quite a lot of income.)

#### 2) Advertising

You can advertise in up to four ways. However you can only choose a website and/or one other.

##### Website

Setting up a website will cost you £15 000. It will enable you to have special offers to your park and therefore attract more people. More will be explained later!

##### Leaflet

These will cost you £50 000. However you will increase your attendance by 10% a day

##### Radio

This will cost you £100 000. However you will increase your attendance by 20% a day

##### TV

This will cost you £250 000. However you will increase your attendance by 30% a day

Decide what improvements you wish to make and record them clearly in table.

### Making it even better...

You can now add new features to your park. There are a number of new rides and facilities which have become available. You can add these to your park if you have the space and money to do so. You can also add in the features that were on the original list. Remember to keep clear records of how much money you are spending and most importantly how much money you have in the bank. You will need to update the plan of your park. If you have bought extra land you may need to stick squares onto your paper. Get ready for the final season!

### 3<sup>rd</sup> SEASON - NEW FEATURES



#### A hotel

Yes it's finally arrived.

To build a hotel it will cost you £150 000 and you must have 16 squares (4 squares by 4 squares) free in your park.

You may only have 1 hotel in your park.



#### A swimming pool

Build a swimming pool with water slides and a fantastic wave machine.

To build a swimming pool will cost you £95 000 and you must have 12 squares (4 squares by 3 squares) free in your park.

You may only have 1 swimming pool in your park.



#### A cinema

Build an amazing 3D cinema spectacular.

To build a cinema will cost you £75 000 and you must have 9 squares (3 squares by 3 squares) free in your park.

You may only have 1 cinema in your park.

## Task 15: Running your theme park (season 3)

Again the costs have gone up for the third season. To run your theme park for the final year the following costs will apply to each item that you have every day. How much will it cost to run your theme park for one day?

Item	Costs			
	Staff Costs	Electricity, Maintenance and Repairs	Number in park	Total Costs per day
A Hotel	£180	£140		
A swimming pool	£140	£120		
A cinema	£90	£100		
Category 1 Ride (per ride)	£80 a day	£80 a day		
Category 2 Ride (per ride)	£60 a day	£50 a day		
Category 3 Facility (per facility)	£50 a day	£30 a day		
Toilets (for all toilets)	£10 a day	£7 a day	NA	
Bins (for all bins)	£31.50 a week	£5.25 a week	NA	
Trees (for all trees)	£91.25 a year	None	NA	
Website	£46,000 a year	£25 a day		
		<b>Totals</b>		

Your park is open for 153 days again this year. How much does it cost for the season to open your park?

\_\_\_\_\_

However your hotel is open for 180 days of the year. How much extra will it cost to open your hotel this year? \_\_\_\_\_

Furthermore your swimming pool is open for 350 days of the year. How much extra expenditure is this?

\_\_\_\_\_

**Total cost of opening your park this season:** \_\_\_\_\_ *(add three figures above)*

## Task 16 - Entry Fee

Decide on a price per person to enter your theme park for the third year.

How much money does it cost to open your park each day? \_\_\_\_\_

How many visitors do you think you will have each day during your third season?

Make an estimate: \_\_\_\_\_

Give your plan to a partner, you must not tell them anything about your park. They must use the criteria below to decide your entry fee. You must choose a different person than you did in season 1 and 2

### Price Category 1 - £35 per person.

- A swimming pool and or 3D cinema
- Six or more category 1 rides
- 15 or more rides in total
- A first aid centre
- 6+ category 3 facilities
- A detailed and well set out park with carefully placed bins, benches, toilets and paths.

### Price Category 2 - £25 per person.

- Four or more category 1 rides
- 10 or more rides in total
- A first aid centre
- 6 or more category 3 facilities
- A well set out park with carefully placed bins, benches, toilets and paths.

### Price Category 3 - £15 per person.

- Two or more category 1 rides
- 7 or more rides in total
- A first aid centre
- 4 or more category 3 facilities
- Some consideration to where bins, benches, toilets and paths are placed.

### Price Category 4 - £10 per person

- One or more category 1 rides.
- 5 or more rides in total.
- 2 or more category 3 facilities.
- Some errors in where bins, toilets and paths are placed which may lead to unhappy customers.

Decide on the entry price and enter it here £ \_\_\_\_\_

## Task 17 - How many visitors?

Here are your visitor numbers for each month.

**May (31 days):** 45 602 visitors

**June (30 days):** 49 891 visitors

**July (31 days):** 54 512 visitors

**August (31 days)** 87 003 visitors

**September (30 days)** 64 768 visitors

However depending on the improvements you made you may have attracted more people.

- If you bought a leaflet your attendance figures increased by 10%
- If you bought a radio advert your attendance figures increased by 20%
- If you bought a TV advert your attendance figures increased by 30%

**BUT...**

- If you purchased a website then you managed to get companies to pay for adverts on your website. You managed to raise £250 000 through this.
- You also managed to increase your attendance over the year by 15%. Each of these extra visitors paid a special price of £15 through offers on your website.

**Write down your new attendance and money taken figures below**

**May (31 days):** \_\_\_\_\_ **Money taken this month:** \_\_\_\_\_

**June (30 days):** \_\_\_\_\_ **Money taken this month:** \_\_\_\_\_

**July (31 days):** \_\_\_\_\_ **Money taken this month:** \_\_\_\_\_

**August (31 days):** \_\_\_\_\_ **Money taken this month:** \_\_\_\_\_

**September (30 days):** \_\_\_\_\_ **Money taken this month:** \_\_\_\_\_

**Total number of visitors:** \_\_\_\_\_ **Total Money taken:** \_\_\_\_\_

**Number of extra visitors through owning a website:** \_\_\_\_\_

**Money made through owning a website (each visitor pays £15):** \_\_\_\_\_

**Total Money taken on the gate this year:** \_\_\_\_\_



## Task 18 - What are your profits?

Calculate your season 3 profits by completing the task below.

**Here we go then...**

Total income made on admissions/website £\_\_\_\_\_

How much does it cost for you to open your park every day? £\_\_\_\_\_

Your park is open for 153 days so you need to multiply the above figure by 153.

Total cost of opening your park for the season £\_\_\_\_\_

- Total profit made in season 3 so far: £\_\_\_\_\_ (total profit on admissions/website - total cost of opening park)

**However....**

$\frac{1}{2}$  of your customers spends £10 at **one** of your restaurants. Total income: \_\_\_\_\_

Every customer spends £5 at **each** café you have. Total income: \_\_\_\_\_

Every customer spends £4 at **each** shop you have. Total income: \_\_\_\_\_

Every customer spends £3 at **each** sweet shop you have. Total income: \_\_\_\_\_

Every customer spends £1 at **each** ice cream stand you have. Total income: \_\_\_\_\_

Every customer spends £3 at **each** photo kiosk you have. Total income: \_\_\_\_\_

Every customer spends £5 at the cinema. Total income: \_\_\_\_\_

Every customer spends £5.50 at the swimming pool. Total income: \_\_\_\_\_

**AND.....**

15% of your total visitors also stayed at your hotel. How many people was this? \_\_\_\_\_

Each one of these customers paid £75 to stay 2 nights. How much was raised through your hotel? \_\_\_\_\_

**What is the total profit made on all of your attractions?** \_\_\_\_\_

Now add this amount to the figure at the top of the page (the figure next to the bullet point)

**Current total profit in season 3:** \_\_\_\_\_

## Task 19: Taxes and Insurance!

At the end of season 3 you receive another letter from the inland revenue. These are the people who collect taxes for the government.

As you are in charge of your own company you have to pay tax on the profits you make.

30% of your profits in season 3 now have to be paid to the government.

Work it out....

Total profits on season 3: £\_\_\_\_\_

30% of your profits: £\_\_\_\_\_

Total amount to be paid in taxes: £\_\_\_\_\_



New current total profit for season 3: \_\_\_\_\_

### Insurance renewal...

The insurance on your park is up for renewal. Insurance is a legal requirement and you are not allowed to open your park without a certificate. Therefore you have no choice but to renew the insurance certificate at the following costs.

Price Category 1: £250 000

Price Category 2: £200 000

Price Category 3: £175 000

Price Category 4: £150 000



Deduct the above costs from your yearly profits.

What are your final season 3 profits: \_\_\_\_\_

What money do you now have in the bank in total: \_\_\_\_\_

## Task 20: Your loan!

At the beginning of season 1 you took out a £500 000 loan with Barclays Bank.

In season 1 it was interest free which meant at the end of season 1 you still owed £500 000 to the bank.

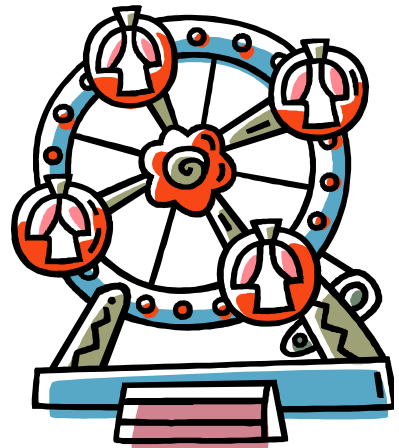
However in season 2 and 3 the loan is subject to 11% interest. This means that 11% is added onto the loan at the end of every season.

Work out how much you now owe:

**Season 1:** £500 000

**Season 2:** £555 000

**Season 3:** \_\_\_\_\_ (add 11% onto £555 000)



**So...**

You are now at the end of season 3.

What is the total amount in your bank? £\_\_\_\_\_

How much loan do you owe? £\_\_\_\_\_

You must now pay back the loan to the bank. (subtract the above two figures)

How much are you left with? \_\_\_\_\_

**Total Money in the bank at the end of the Theme Park Maths:** \_\_\_\_\_